



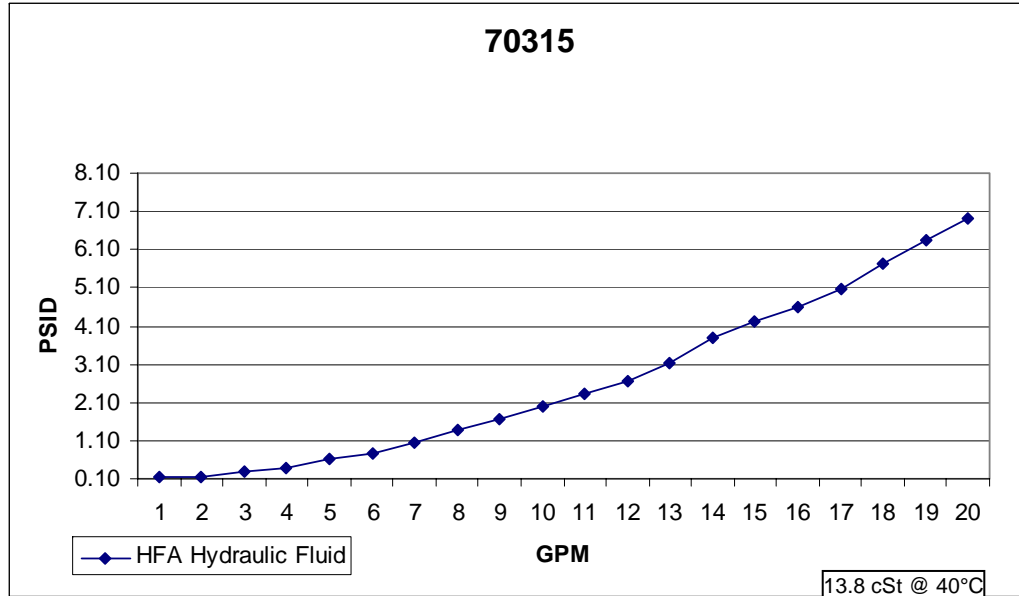
201 N. Champaign St. Bement, Illinois 61813

COMPRESSOR REPLACEMENT B33=75

Media Type: Cellulose

Max Working Pressure (psi): 175

Core Collapse Pressure (psid): 80

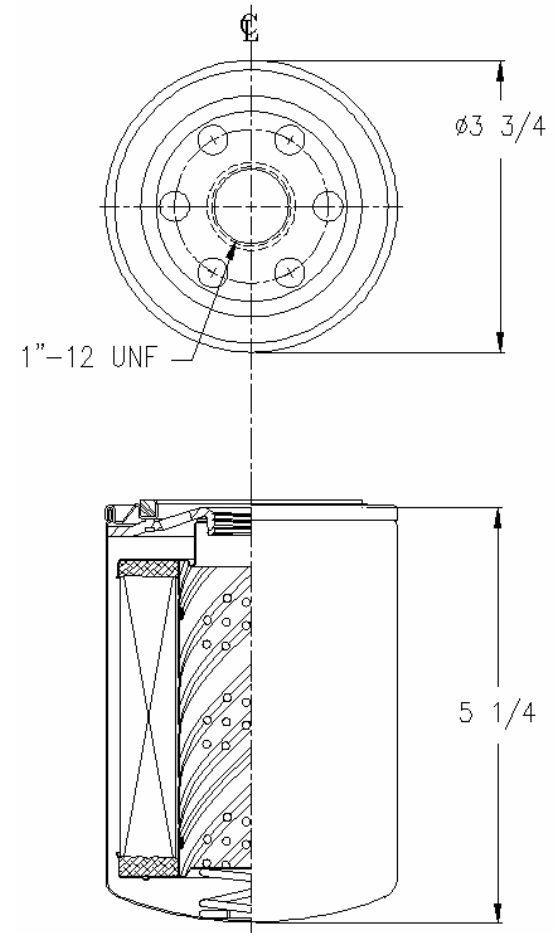


NOTES:

1. Technical Data subject to change without notice.
2. Tests are conducted with Mobile Aero HFA Aviation Hydraulic Fluid.
3. Filters are not to be used with aviation applications.

jw 02/13/09 Rev A

Technical Data Sheet - 70315



B₁₀=2
 β₁₄=3
 β₃₃=75
 β₃₇=200
 β₄₆=500

Gasket:

I. D. 2 13/32
 O. D. 2 25/32